

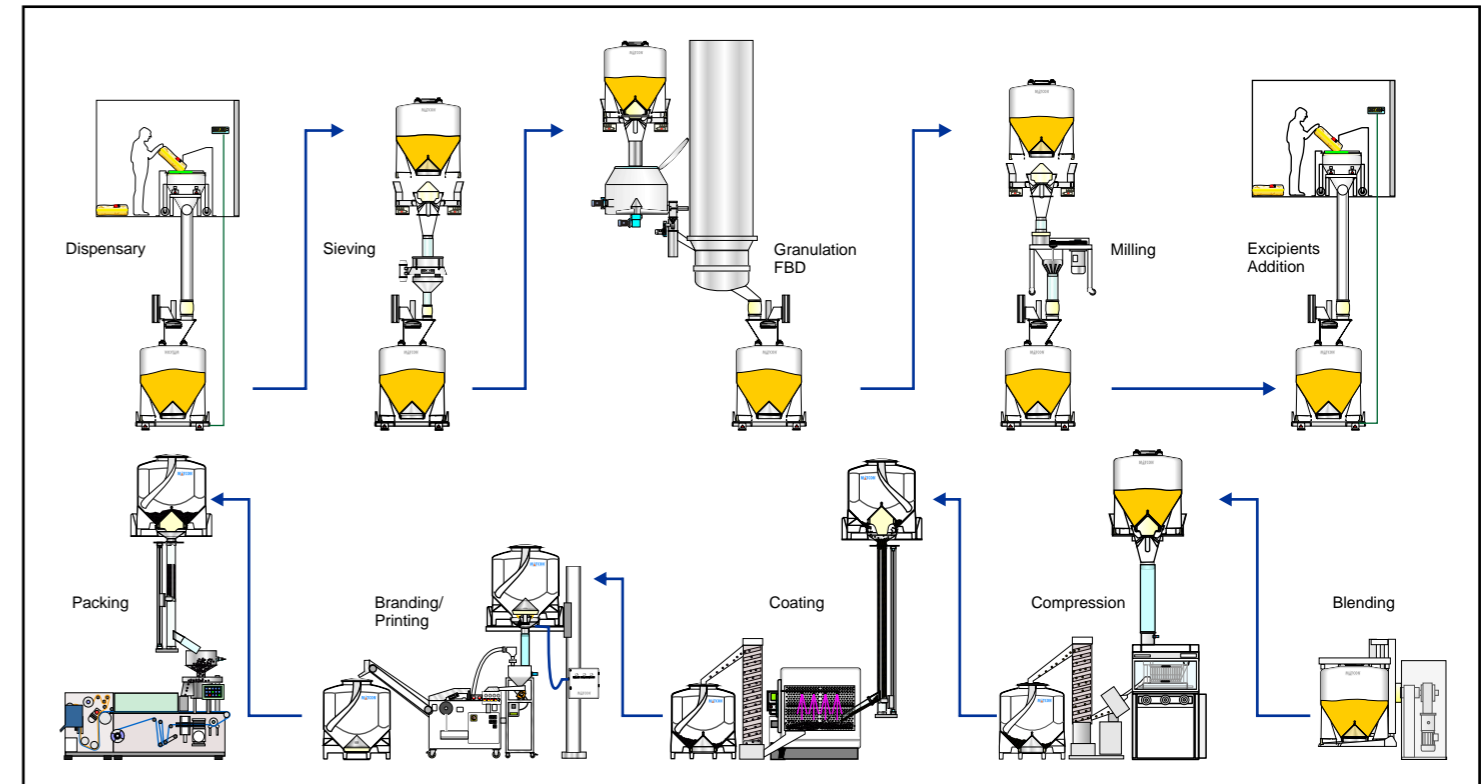
REFERENCES

Alphapharm
AstraZeneca
Bard (Napp)
Belupo
Eli-Lilly
Galen
Gerard
Genzyme
GSK
Helsinn Birex
Hoffmann La Roche
Jaba
KRKA
Norgine
Norton
Novartis
Pfizer
Rottapharm
Sanofi-Synthelabo
Schering Plough

CONTAINMENT REFERENCES

Customer	OELs µg/m ³
AstraZeneca	1
Bayer	10-100
Eli Lilly	5-50
Janssen	<1
Lundbeck	5-50
Pfizer	10-100
Schering Plough	10-50
Sanofi-Synthelabo	10-100
Takeda	10-100

IBC SOLUTIONS FOR SOLID DOSAGE



- *Controlled Feed to Process*
- *Closed System Approach/Containment*
- *Flexibility and Efficiency*
- *Bulk Tablet Handling Without Damage*
- *Clean In Place*



Sack Tip & Sieve



Recipe Formulation



IBC Blending



Auger Filling



Powder Packer



IBC Wash Station



S Series IBC



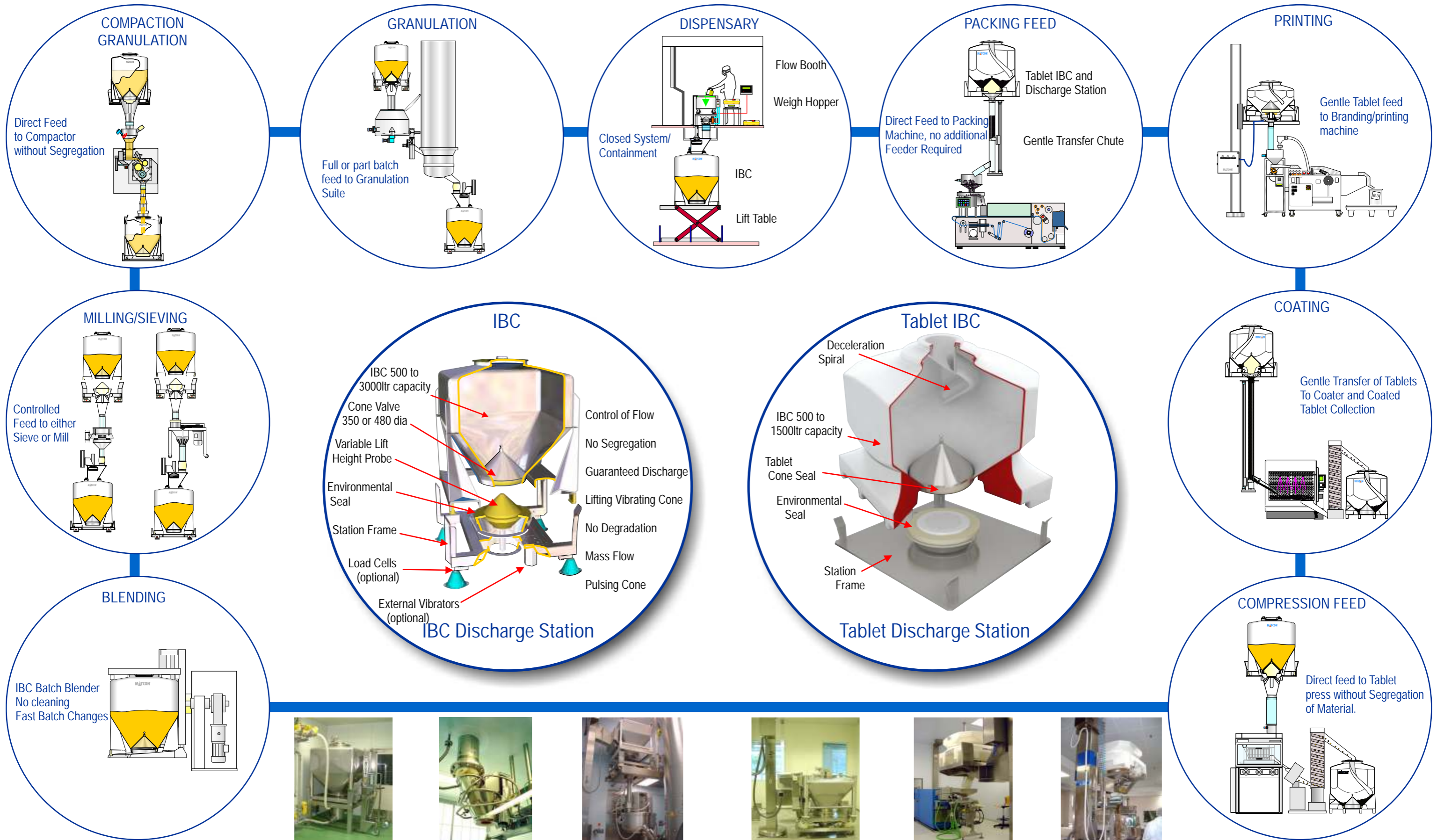
R Series IBC



H Series IBC

This information and data is provided for illustrative purposes only and does not form part of any contract or agreement. The information and data may be updated and changed from time to time.

SOLID DOSAGE APPLICATIONS



IBC Wash Station



Contained Transfer



Granulation Feed



Compression Feed



Branding/Printing



Blister Packing