

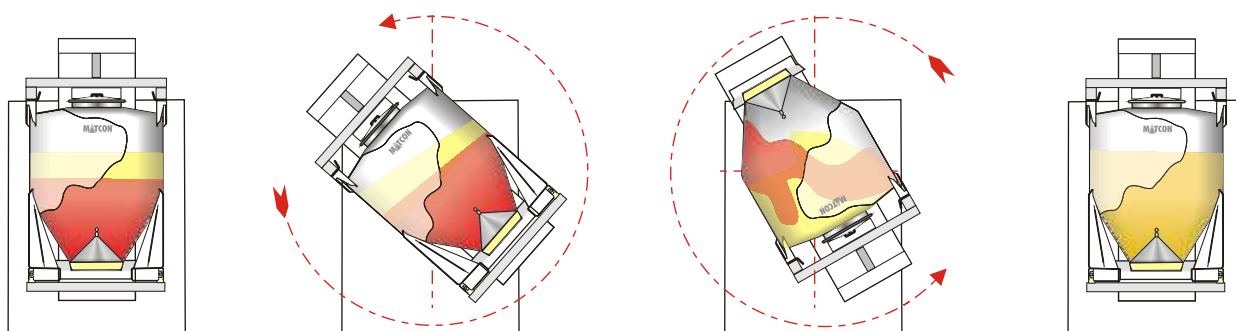
IBC BATCH BLENDER

General:

The IBC Batch Blender is part of the unique Matcontainer range of equipment designed to tumble blend powders in Matcon's range of Intermediate Bulk Containers (IBCs).

Blending:

Before starting the blending operation IBCs are hydraulically clamped in position and the Cone Valve is automatically clamped in place. A sensor also checks that the IBC lid is in place. Blending takes place by simply tumbling the IBC, end over end, on an asymmetric axis, causing the contents to flow over each other. The Cone Valve inside the IBC helps to disperse the contents and achieve homogenous blending. Typically the IBC has 1/3 free volume (ullage) to allow adequate tumbling of the contents. However, some users blend successfully at greater or lesser free volume. The blend speed and time can be configured to suit the materials concerned. All operations are controlled by PLC.



1. IBC clamped ready for blending.

2. Start of blend cycle.

3. Blender running.

4. Blend program complete-IBC ready for unloading.

Segregation:

Successful blending can be destroyed if the IBC is transported, stored or discharged incorrectly. Vibration during transportation and storage should be avoided. Discharge will take place using the Matcon Cone Valve IBC Discharge Station, which ensures "mass flow" out of the IBC and avoids segregation problems.

Safety:

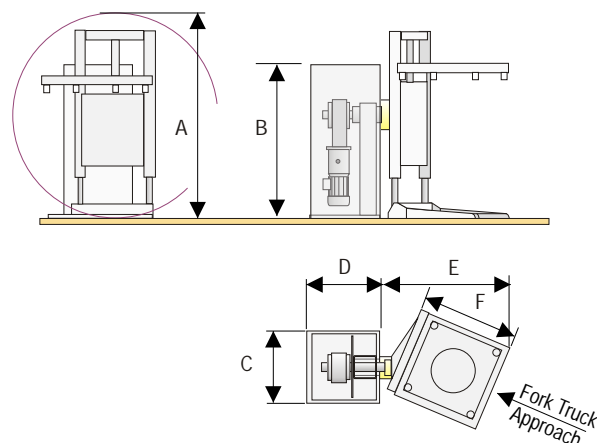
Rotating equipment is dangerous. Blenders must be located in a dedicated area with means to prevent personnel access, while the unit is operating. The Blender operation is normally interlocked with access doors.

Options:

The following options are available,

- Mild Steel or Stainless Steel Construction.
- Suitable for use with single or multi size IBCs.
- IBCs 500 ltrs to 2500 ltrs / 17.5 to 87.5 cu.ft.
- PLC Control.
- Cladding.

Cage Rotation



Dimension	A	B	C	D	E	F
mm	3000	2250	1000	1000	1900	1300
inches	118	89	39	39	75	51

This information and data is provided for illustrative purposes only and does not form part of any contract or agreement. The information and data may be updated and changed from time to time.