

TABLET DISCHARGE STATION

General:

The IBC Discharge Station is part of the unique Matcontainer range of equipment designed to discharge Matcon's Cone Valve Intermediate Bulk Containers (IBCs). The Tablet Discharge Station has been specifically developed to operate with Matcon's Tablet IBC to provide bulk discharge of tablets without damage.

Discharging:

The Discharge Station incorporates a lifting "probe" which engages and locks to the Cone Valve in the IBC. On demand, this probe lifts gently and slowly, carrying the Cone Valve upwards into the contents of the IBC and creating an annular gap around its perimeter, through which the tablets flow. The lift height of the probe (and thus the annular gap around the Cone Valve) is adjustable to suit the flow characteristics of the tablet and the desired discharge rate.

Dosing & Automatic Control:

The Discharge Station can be controlled in a variety of ways to automatically dose tablets to a process below. For example this can be by flood feeding, timers or level sensors in the infeed of the process below.

Sealed Operation:

The Lip Seal is a feature that is fitted to all Matcon Discharge Stations. This provides a sealed connection between the outlet of the IBC and the Discharge Station during material Discharge. In addition, an expanding "Pneumaseal" locks the Discharge Station probe to the IBC Cone Valve to deliver an even higher level of dust tight operation before, during and after material transfer.

Cleaning:

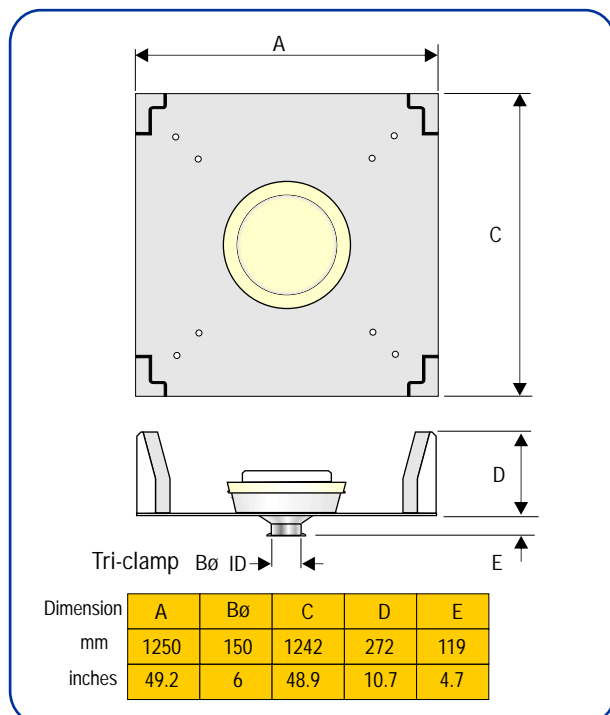
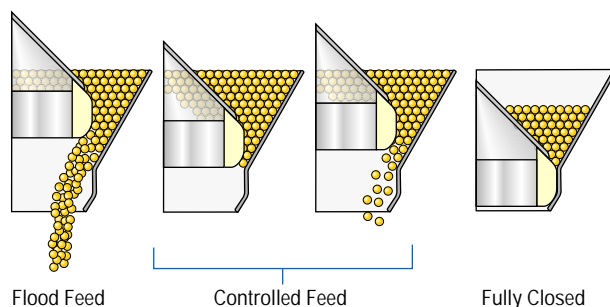
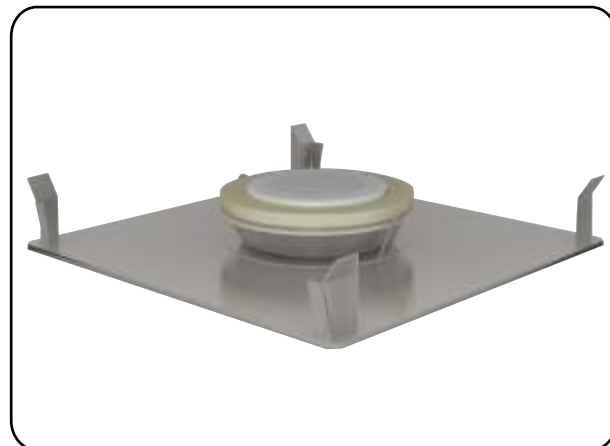
The IBC Discharge Station is designed to be easily and thoroughly cleaned. Working components are fully sealed behind an air-tight flexible cover. Cleaning may be done off place by removing the central hopper (material contact surfaces) and washing manually in a suitable location. Alternatively Cleaning In Place (CIP) may be used to automatically wash the material contact surfaces without hopper removal.

Options:

As standard the IBC Discharge Station (central hopper & IBC location frame) is manufactured in Stainless Steel.

The following options are available.

- Air wash cleaning system.
- Clean-In-Place (CIP).



This information and data is provided for illustrative purposes only and does not form part of any contract or agreement. The information and data may be updated and changed from time to time.